



Key Facts

- The natural transitional area around raised bogs (lagg zone) is vital for supporting raised bog ecosystems.
- Raised bogs provide a range of ecosystem services, including biodiversity, clean water and carbon storage.
- Pressures from land use in these transitional zones have altered the ecosystem, resulting in the loss of these important ecosystem services
- The FarmPEAT project aims to work with farmers in these transitional zones to help restore these important ecosystems and the services they provide .

How to Apply

Complete an expression of interest form (available to download on www.farmpeat.ie) and send it to the project team.

Keep in Touch

To find out more about the project visit our website or follow us on social media. You can also get in touch with us by phone or email.

FarmPEAT Project | c/o Irish Rural Link
Moate Business Park | Clara Rd.
Moate | County Westmeath
Ireland | N37 W9R0

T: 090-6482745
e-mail: Info@farmpeat.ie
web: www.farmpeat.ie
facebook: FarmPEAT Project
twitter: @farmpeatproject



FarmPEAT

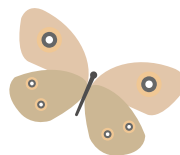
Farming with nature in the midland raised bog landscape



How will the FarmPEAT Programme work for the farmer?

Once your application has been successful the project team will survey your farm during the summer season to score your farmland habitats. The project team will then work with each participant to develop a farm plan and identify possible actions aimed specifically at improving the score of their farm. All of these actions are entirely voluntary and it is up to the farmer whether they decide to progress with the actions or not. An additional payment will be made to the farmer to help fund any supporting actions completed and it is hoped that the score of the farm will increase in subsequent years.

FarmPEAT Project Partners

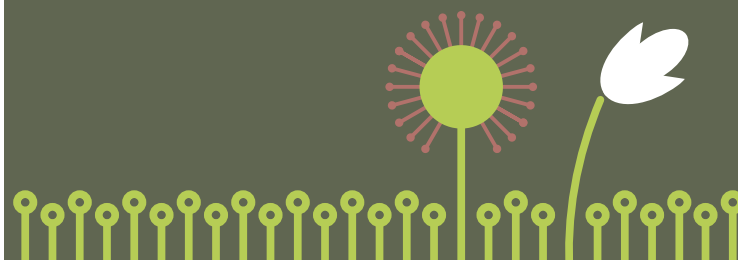


An Roinn Talmhaíochta,
Bia agus Mara
Department of Agriculture,
Food and the Marine

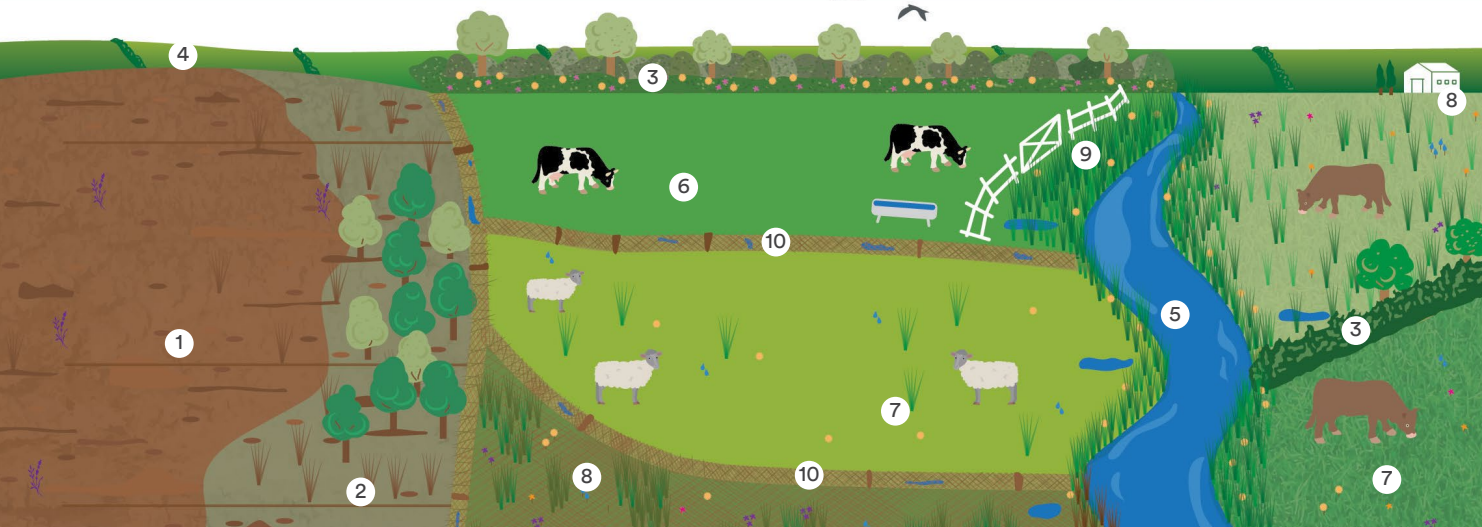


The European Agricultural Fund
for Rural Development: Europe
investing in rural areas

The FarmPEAT Project is an EIP (European Innovation Partnership) Locally Led Scheme being administered by Nature Based Agri Solutions Ltd. The Project is funded by the Dept. of Agriculture, Food and the Marine as part of Ireland's Rural Development Programme 2014-2020.



Farming with nature in the midland raised bog landscape



- | | | | |
|---------------------------------|----------------------------|--|----------------------------------|
| 1 Healthy Raised Bog
☁️ 💧 🌿 | 4 Esker
☁️ | 7 Semi-improved Grassland
🌾 🐄 🌿 | 9 Riparian Buffer Zone
☁️ 💧 🌿 |
| 2 Transitional Area
☁️ 💧 🌿 | 5 Unpolluted River
☁️ 💧 | 8 Species-rich Wet Grassland
☁️ 💧 🌿 🌾 | 10 Vegetated Drains
☁️ 💧 |
| 3 Biodiverse Hedgerow
☁️ 🌿 🌿 | 6 Improved Grassland
🌿 | | |

Key to main ecosystem services: ☁️ Biodiversity 💧 Water quality 🌿 Food Production ☁️ Climate / Carbon sequestration

About the Project

The FarmPEAT (Farm Payments for Ecological and Agricultural Transitions) Project is developing a locally-led, innovative, results-based farm scheme for farmers who manage lands that surround some of Ireland's finest remaining raised bogs.

Raised bogs represent one of the most valuable natural ecosystems in Ireland and the agricultural land in the transitional zone surrounding these bogs can play an important role in maintaining and enhancing their long term conservation value.

Eligible Areas

Farmers farming land surrounding any of the following eight raised bogs can apply to join the FarmPeat agri-environmental programme:

- Ballynamona Bog and Corkip Lough, Roscommon
- Clara Bog, Offaly
- Clonboley Bog, Roscommon
- Cloncrow (New Forest) Bog, Westmeath
- Daingean Bog, Offaly
- Ferbane Bog, Offaly
- Raheenmore Bog, Offaly
- Umeras Bog, Kildare / Offaly

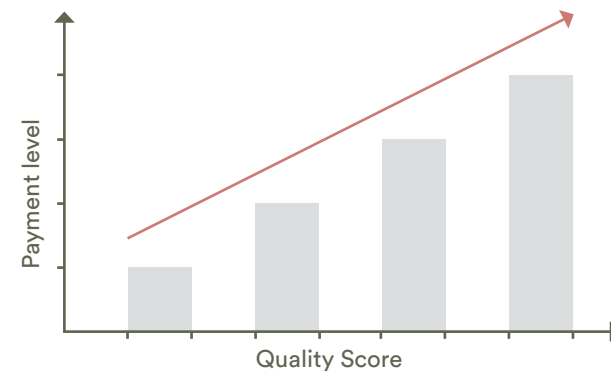


See detailed maps on our website www.farmpeat.ie

FarmPEAT Programme



The FarmPEAT programme will reward farmers for improved management of habitats on peat soils along with other important landscape features such as eskers, field boundaries and watercourses. The programme will be results-based whereby farmers will get paid depending on the scores they achieve, with higher scores, indicating higher environmental quality, getting higher payments.



RESULTS PAYMENT

(Habitat Quality x Whole Farm Adjustment)



Farmer

Supporting Actions Payment

We hope to build on the success of other locally led projects elsewhere in Ireland such as the Burren Programme, BRIDE Project and the Hen Harrier and Pearl Mussel projects.